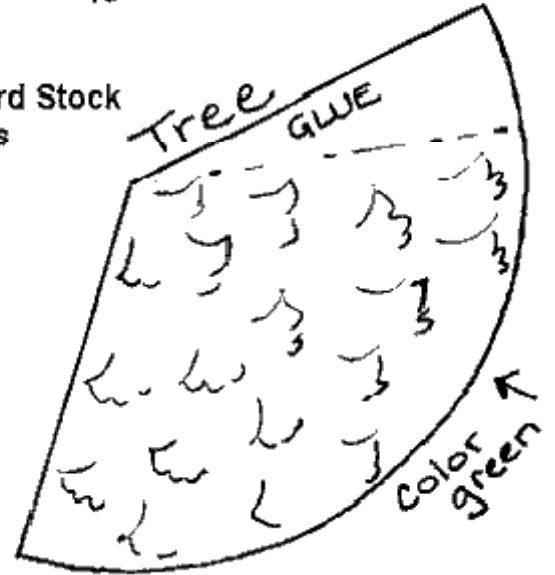


# A Little Christmas Village

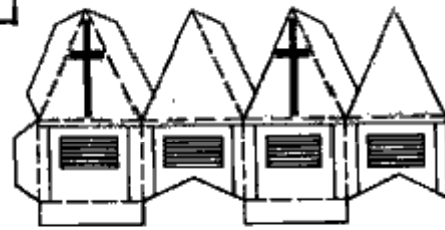
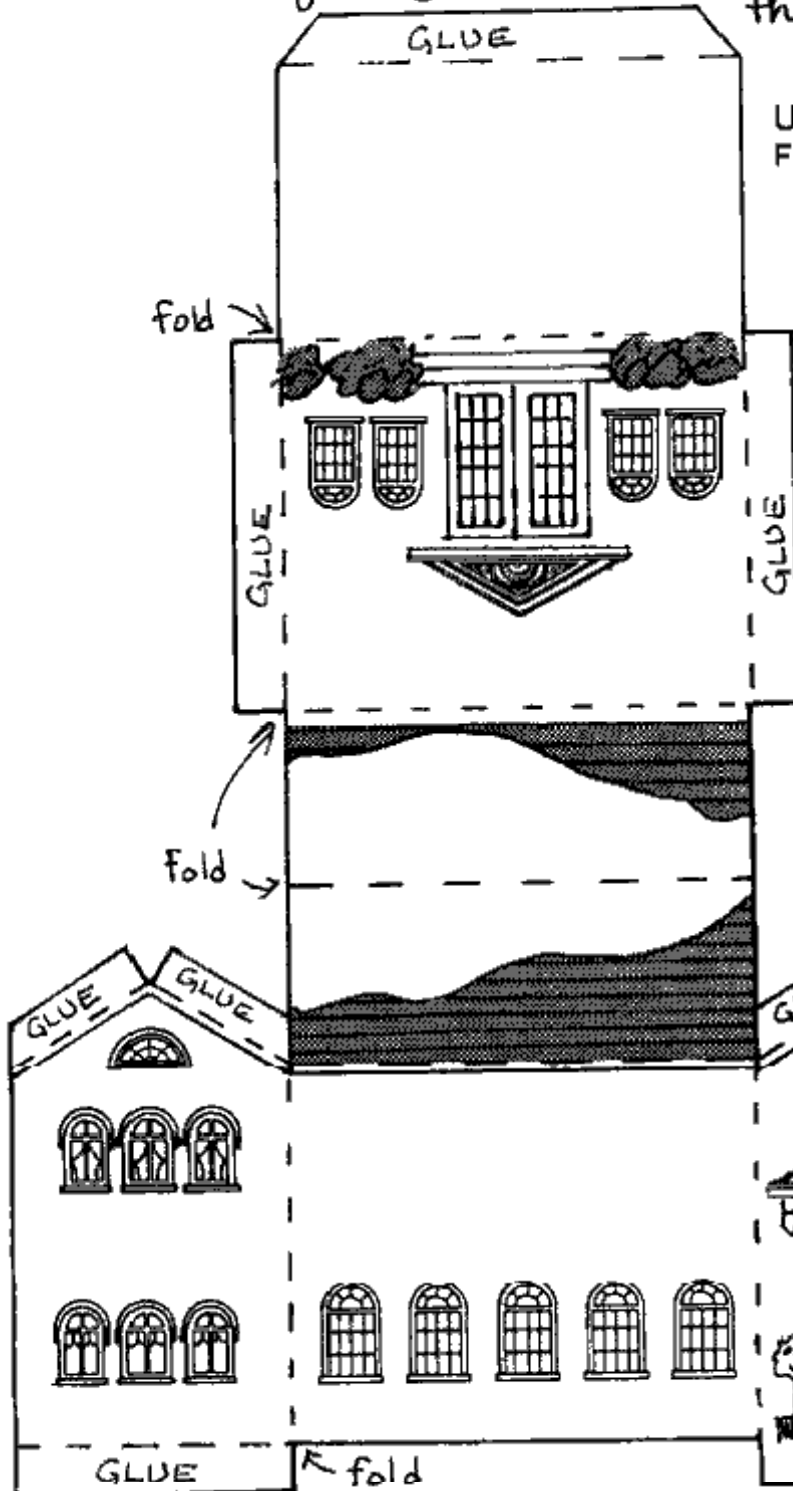
On this page and the next you have a church, two houses and two trees. Cut out along the solid lines and make folds along the dotted lines. Glue all the tabs. Color all the pieces before you cut!! Do not color the glue tabs!



Use Card Stock For This



© www.ScrapbookScrapbook.com

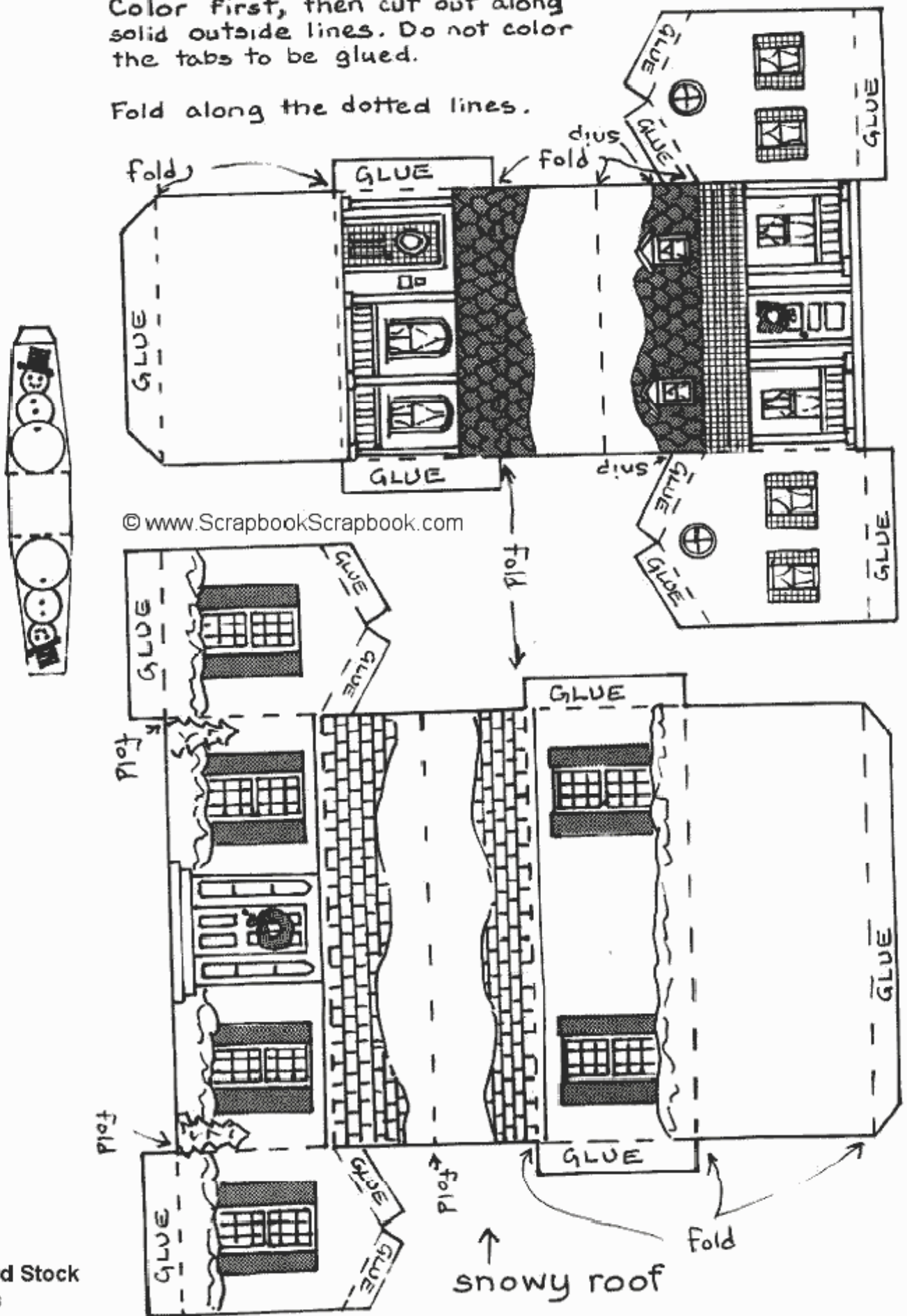


Church & Steeple



Color first, then cut out along solid outside lines. Do not color the tabs to be glued.

Fold along the dotted lines.



Use Card Stock  
For This